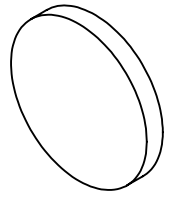


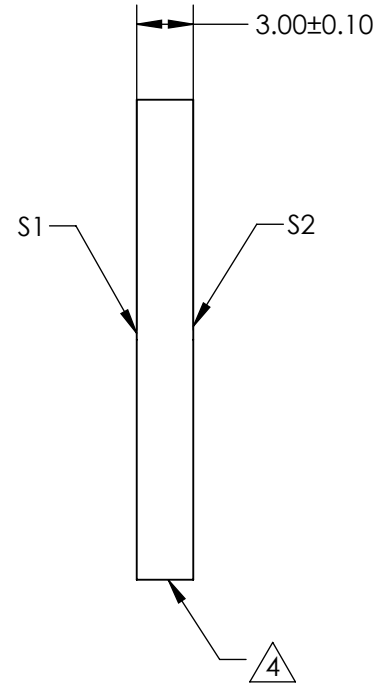
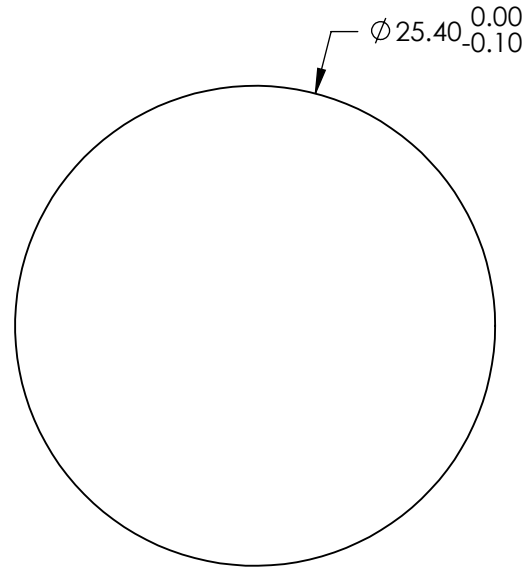
NOTES:

1. SUBSTRATE:  
FUSED SILICA (CORNING 7980)
2. S1 TO BE PARALLEL WITH S2 TO WITHIN <1 ARCMIN
3. COATING (APPLY ACROSS CLEAR APERTURE)  
S1 & S2: VIS 0° (425-675nm)  
R(AVG) ≤0.4% @ 425 - 675nm



4. FINE GRIND SURFACE

5. ROHS COMPLIANT



**FOR INFORMATION ONLY:  
DO NOT MANUFACTURE  
PARTS TO THIS DRAWING**

SPECIFICATIONS SUBJECT TO CHANGE WITHOUT NOTICE  
DIMENSIONS ARE FOR REFERENCE ONLY

	S1	S2
SHAPE	PLANO	PLANO
SURFACE QUALITY	40 - 20	40 - 20
CLEAR APERTURE	$\phi 22.86$	$\phi 22.86$
BEVEL	PROTECTED AS NEEDED	PROTECTED AS NEEDED



ALL DIMS IN mm

**EO**® Edmund Optics®

TITLE

25.4mm Dia., 3mm Thick, VIS 0° Coated,  $\lambda/4$   
Fused Silica Window

DWG NO

72379

SHEET  
39 OF 84