

NOTES:

1. SUBSTRATE:
FUSED SILICA
2. COATING (APPLY ACROSS COATING APERTURE)

S1 & S2: 532nm Laser AR Coating
R(ABS) < 0.25% @ 532nm @ 0° AOI

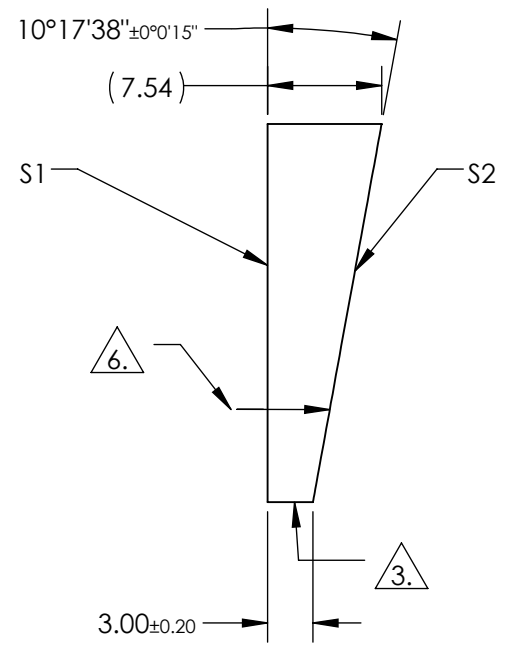
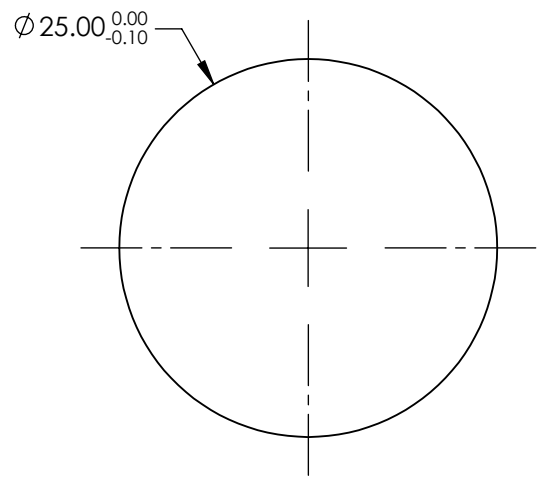
DAMAGE THRESHOLD,
PULSED: 10J/cm² @ 20ns, 20Hz @ 532nm

3. FINE GRIND SURFACE

4. POWER, IRREGULARITY, AND SURFACE QUALITY SPECIFICATIONS APPLY ACROSS CLEAR APERTURE
5. IMAGE ORIENTATION: BEAM DEVIATION

6. APPLY ARROW ON EDGE WITH PENCIL OR PERMANENT INK POINTING TOWARDS TITLTED SURFACE S2

7. ROHS COMPLIANT



**FOR INFORMATION ONLY:
DO NOT MANUFACTURE
PARTS TO THIS DRAWING**

SPECIFICATIONS SUBJECT TO CHANGE WITHOUT NOTICE
DIMENSIONS ARE FOR REFERENCE ONLY

| | S1 | S2 |
|-------------------------|----------------------|----------------------|
| SHAPE | PLANO | PLANO |
| SURFACE QUALITY | 20-10 | 20-10 |
| MIN CLEAR APERTURE | Ø22.5 | Ø22.5 |
| MIN COATING APERTURE | Ø22.5 | Ø22.5 |
| POWER AT 632.8nm | 0.5 RINGS | 0.5 RINGS |
| IRREGULARITY AT 632.8nm | 0.2 RINGS | 0.2 RINGS |
| BEVEL | PROTECTIVE AS NEEDED | PROTECTIVE AS NEEDED |



| | | | |
|------------------------|-------------|---------------------------------|--------------|
| THIRD ANGLE PROJECTION | TITLE | PRISM WEDGE FS 5 DEG 25mm 532nm | |
| | ALL DIMS IN | mm | DWG NO 39122 |
| | | | SHEET 1 OF 1 |